

Scarlet Red Rose Bracelet
By: Carolyn Conley
CC Design



This bracelet has been featured in Australian Beading Magazine

Scarlet Bracelet Instructions

Time to Fully Complete Project: An evening.

Dimensions: The bracelet is 8" long.

Tips: The bracelet can be made longer by adding swarovski crystal beads to each end, or by using a larger toggle. The bracelet can be made shorter by taking out a swarovski crystal bead, and rose bud bead at one end, or both ends.

Materials List:

- 11 inches of soft flex cording
- 2 1.5x2mm sterling silver crimp beads
- 1 10-13mm sterling silver toggle
- 10 6mm tourmaline green bicone swarovski crystal beads
- 20 6mm garnet red bicone swarovski crystal beads
- 10 8-10mm tourmaline green leaf beads
- 8 6mm sterling silver bead caps
- 4 open red rose lampwork beads
- 5 8-11mm red rose bud polymer clay beads
- 10 2" sterling silver headpins 22-24 ga
- 20 1" sterling silver headpins 22-24 ga
- 10 6mm sterling silver closed jump rings

Tools: Needle nose pliers, crimping pliers, and wire cutters.

Supply Source

www.beadaholique.com

soft flex cording Item SKU #: XCR-5493 <http://www.beadaholique.com/p-10584-soft-touch-best-beading-wire-019-inch-30ft-soft-flex.aspx>

sterling silver crimp beads Item SKU #: FCR-1152 <http://www.beadaholique.com/p-9683-sterling-silver-micro-crimp-beads-15mm-x-2mm-100.aspx>

sterling silver toggle Item SKU #: FCL-3115 <http://www.beadaholique.com/p-9250-sterling-silver-fancy-toggle-clasp-15mm-1-set.aspx>

2" sterling silver headpins Item SKU #: FHP-2320 <http://www.beadaholique.com/p-9279-sterling-silver-head-pins-22-ga-2-in-20.aspx>

1" sterling silver headpins Item SKU #: FHP-2310 <http://www.beadaholique.com/p-9496-sterling-silver-head-pins-22-ga-1-inch-x50.aspx>

6mm sterling silver closed jump rings Item SKU #: FJR-4065 <http://www.beadaholique.com/p-9606-sterling-silver-closed-6mm-jump-rings-19-gauge-25.aspx>

www.firemountaingems.com

6mm sterling silver bead caps Item # H20-7303FN

<http://www.firemountaingems.com/search.asp?skw=H20%2D7303FN>

bicone swarovski crystal beads <http://www.artbeads.com/swarovski-5301.html>

8-10 mm leaf beads http://buttony.zoovy.com/category/glass_leaf_beads.10mm_ivy/

OR http://stores.ebay.com/Glass-Bead-Garden-Beads-and-Jewelry_LEAF-BEADS_W0QQcolZ2QQdirZ1QQfsubZ17QQftidZ2QQtZkm

Rose bud polymer clay beads. These clay rose can be hard to find. Here are a few sellers that make polymer clay roses. You may need to ask the seller for a special request to get the right size and color.

[http://stores.ebay.com/Garlands-and-](http://stores.ebay.com/Garlands-and-Roses_W0QQcolZ2QQdirZQ2d1QQfsubZQ2d999QQftidZ2QQtZkm)

[Roses_W0QQcolZ2QQdirZQ2d1QQfsubZQ2d999QQftidZ2QQtZkm](http://stores.ebay.com/Garlands-and-Roses_W0QQcolZ2QQdirZQ2d1QQfsubZQ2d999QQftidZ2QQtZkm)

http://stores.ebay.com/B-Y-Creations_W0QQcolZ4QQdirZ1QQfsubZQ2d999QQftidZ2QQtZkm

<http://stores.ebay.com/thestylehome>

<http://www.jennysbeadbox.co.uk/rose-beads---18-mm-118-c.asp>

http://stores.shop.ebay.com/SfcDirect_W0QQ_armrsZ1

http://www.etsy.com/shop.php?user_id=5175860

Instructions in Numbered Order:

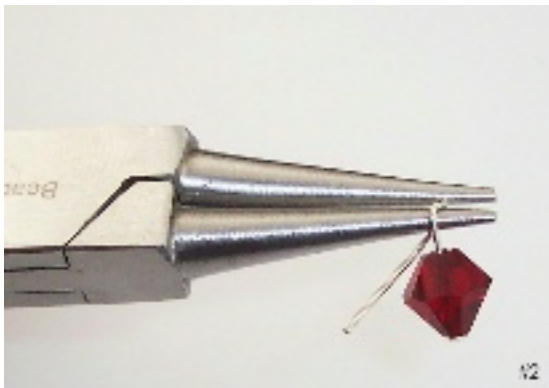
Step #1 Take the 11" of soft flex cording and string one crimp bead, then string the round toggle after the crimp bead. Run the soft flex cording back through the crimp bead and pull tight to secure the toggle. Leave about an inch of soft flex cording to be cut off (photo 1). Take the crimping pliers and close down on the crimp bead. Cut off the extra 1" cording with the wire cutters. Set bracelet aside.

Photo 1



Step #2 Next assemble the swarovski beads and leaf beads on the jump rings. Take one jump ring, one 2" headpin, two 1" headpins, 2 red swarovski beads and 1 leaf bead. Place one swarovski bead on the 1" headpin. Use the needle nose pliers to make a loop (photo 2).

Photo 2



Add the jump ring to the loop (photo 3).

Photo 3



Twist the headpin around close to the swarovski bead (photo 4).

Photo 4



Cut off the excess headpin with the wire cutters. Repeat the same loop technique adding the second swarovski bead to the jump ring. Repeat the same loop technique adding the leaf bead using the 2" headpin to the jump ring. Cut off the access wire (photo 5).

Photo 5



Repeat Step #2 nine times.

Step #3 Take the bracelet that was set aside and add one green swarovski bead, one jump ring, one red rose clay bead, one jump ring, one green swarovski bead, one silver bead cap, one lampwork open rose bead, and one silver bead cap bead to the cord (photo 6). Repeat 3 times.

Photo 6



Step #4 Next add one green swarovski bead, one jump ring, one red rose clay bead, one jump ring and one green swarovski bead (photo 7).

Photo 7



Step #5 Add a crimp bead and the other end of the toggle to the bracelet. Then run the soft flex cording back through the crimp bead and pull tight to secure toggle (photo 8).

Photo 8



Take the crimping pliers and closer down on the crimp bead. Cut off the extra soft flex cording with the wire cutters (photo 9). The bracelet is finished and ready to wear (photo 10).

Photo 9



Photo 10



